

GM Classic

Presented By
Yuma Bike Club

USA CYCLING
PERMIT# 2011-3030

November 5 & 6, 2011
Yuma, AZ



Omnium Cash Prizes total-\$2600

RACE LOGISTICS



Timeline

Registration is now open through November 1, 2011, 11:59pm ET.



NO DAY-OF REGISTRATION.

- 11/01 On-Line Registration Closes Midnight ET (9pm AZ Time)
No day-of registration – on-line only
- 11/04 Packet Pick-up - Friday 6 – 9 pm – will include TT/RR start time
Clarion Suites 2600 4th Avenue Yuma, AZ 85364 (928)726-4830
- 11/05 Saturday 7:00 am GM Test Track Time Trial
- Packet Pick-up available, Sign-in Starts 6am, GM TT results will be posted at Clarion Suites lobby after 4 pm 11/05.
- 11/06 Sunday 8 am Wellton Road Race -Sign-in 7 am Racing Starts 8am,
Awards/prizes given shortly after results are final

Unofficial results of the GM Classic Omnium will be posted online by 10pm 11/06.

Host Hotel Accommodations – Clarion Suites 2600 4th Avenue Yuma, AZ 85364 (928)726-4830 Let Reservations know that you with the GM Classic.

BRING YOUR TRAINER to WARM-UP -road access is limited at venues

Please be sure to Thank our USAC Officials!

Ms. Alicia Heiserer

Mr. Don Melhado

Mr. Jay Schreiber

ALL USAC Road Race Rules will be applied

REGISTRATION FEES

Race Categories, Registration Fee, Distances – miles

Pro Men 1-2	Omnium \$70 TT 7.62/RR 99 miles (3 laps)
Men Cat 3, 4, 5	Omnium \$70 TT 7.62/RR 66 miles (2 laps)
Pro Women 1-2	Omnium \$70 TT 7.62/RR 99 miles (3 laps)
Women 3, 4	Omnium \$70 TT 7.62/RR 66 miles (2 laps)
Masters (all categories)	Omnium \$70 TT 7.62/RR 66 miles (2 laps)
Juniors (all categories)	Omnium \$20 TT 7.62/RR 33 miles (1 lap)

All Categories – Time Trial only: \$30, Juniors \$10 / Road Race only: \$50, Juniors \$20

Combined categories will be scored separately – Except Men PRO 1,2, and Women PRO 1,2

Further category changes depending on registration numbers – at discretion of USAC Chief Referee

One day licenses race Cat 5 men and Cat 4 women only -no 1 day license masters racing as per USAC rules. (“one day” licenses may race masters or juniors if they meet the age requirement)

If less than 15 women register then they will all race together and be scored separately.

RACE NUMBERS –

Jersey -goes on your right side, must use \geq 4 safety pins, tie up your pony tails.

Racers are responsible for their number to be seen by the USAC officials for scoring.

Do not crumble, cut, or alter -spray adhesive alone is prohibited -one number for both events – take care of them.

AWARDS Omnium (must complete both events for cash award)

Cash PRO Men1/2 -1st \$300, 2nd \$200, 3rd \$100 places

Cash CAT 3 Men -1st \$150, 2nd \$100, 3rd \$50 places

Cash CAT 4 Men – 1st \$50, 2nd \$30, 3rd \$20 places

Cash Men Masters 40+ - 1st \$150, 2nd \$100, 3rd \$50 places

Cash Men Masters 50+ - 1st \$90, 2nd \$70, 3rd \$40 places

Cash Men Masters 60+/70+ - 1st \$50, 2nd \$30, 3rd \$20 places

Cash PRO Women1/2 -1st \$300, 2nd \$200, 3rd \$100 places

Cash CAT 3 Women – 1st \$90, 2nd \$70, 3rd \$40 places

Cash CAT 4 Women – 1st \$50, 2nd \$30, 3rd \$20 places

Cash Women Masters 40+ - 1st \$50, 2nd \$30, 3rd \$20 places

Juniors and CAT 5 Men - Awards-1st 2nd 3rd places for omnium

All others – Awards given to 1st 2nd 3rd places for individual event entrants

Saturday 11/05 GM Test Track Time Trial

Directions -From host hotel , Clarion Suites, 2600 S. 4th Avenue, take 4th Avenue North to 16th Street (US95), East on 16th Street (US95/E County 9th St) approx. 28 miles. TT will be on the west side of US95, signs at entrance of GM/YPG Testing Facility. TT Route and Elevation Chart Below. Bring your trainer for warm-up – no littering please, in parking area or TT route.

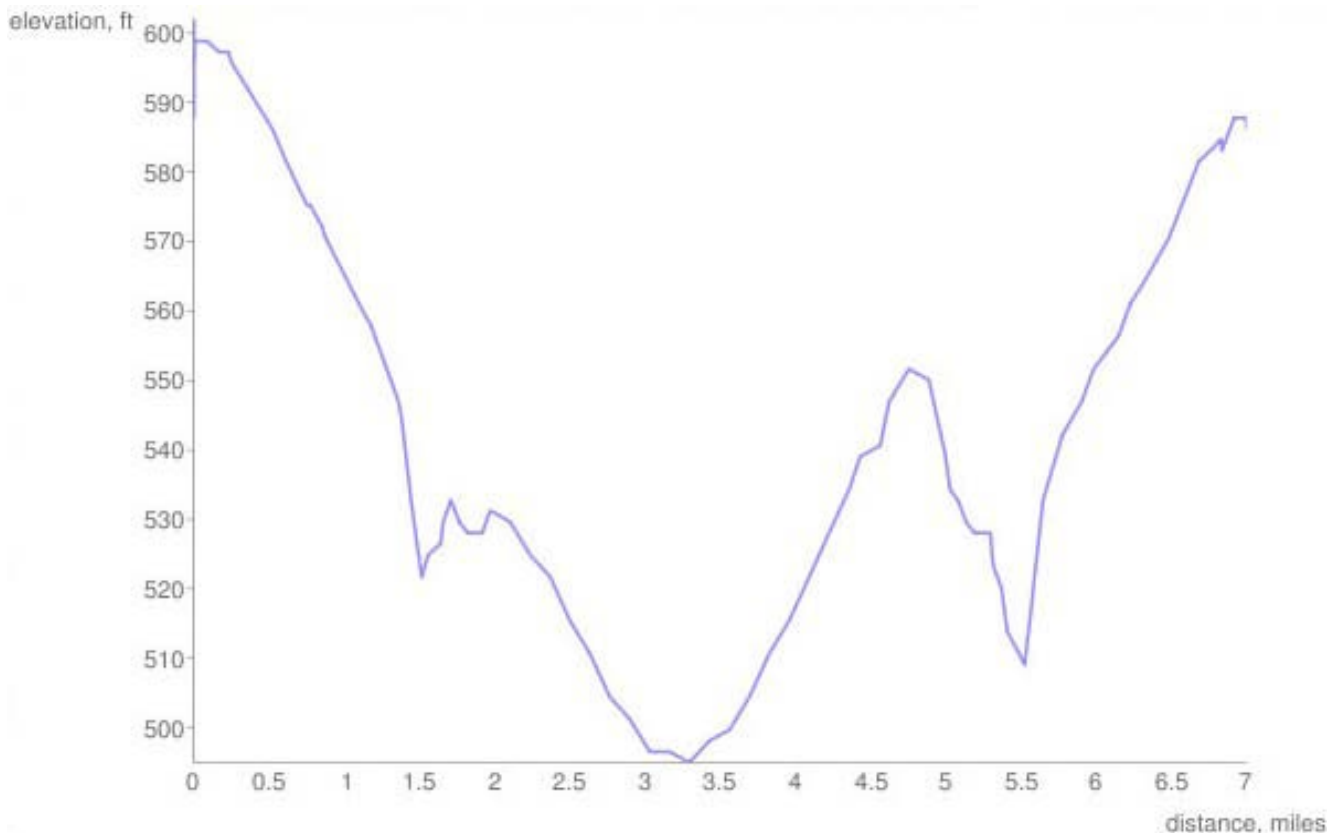
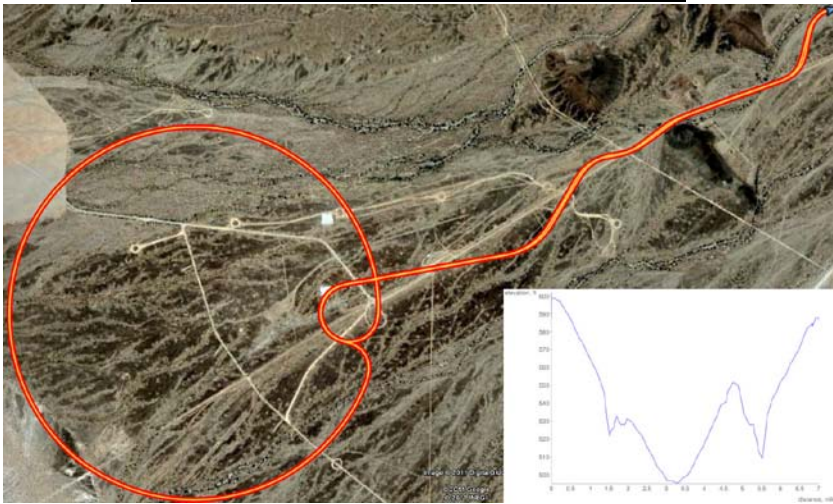
6:00 -7:00 am Time Trial Sign-in – packet pick-up/sign USAC Waiver

Be sure to sign-in - **start times with packet and available at sign in table.**

Place Jersey number on the right side of jersey, it is Rider's responsibility to make sure number is visible to Officials.

Time Trial Starts at 7 am (out and back 7.62 miles)

6:50 am Racers to the start area for instructions



Sunday 11/06 Wellton Road Race

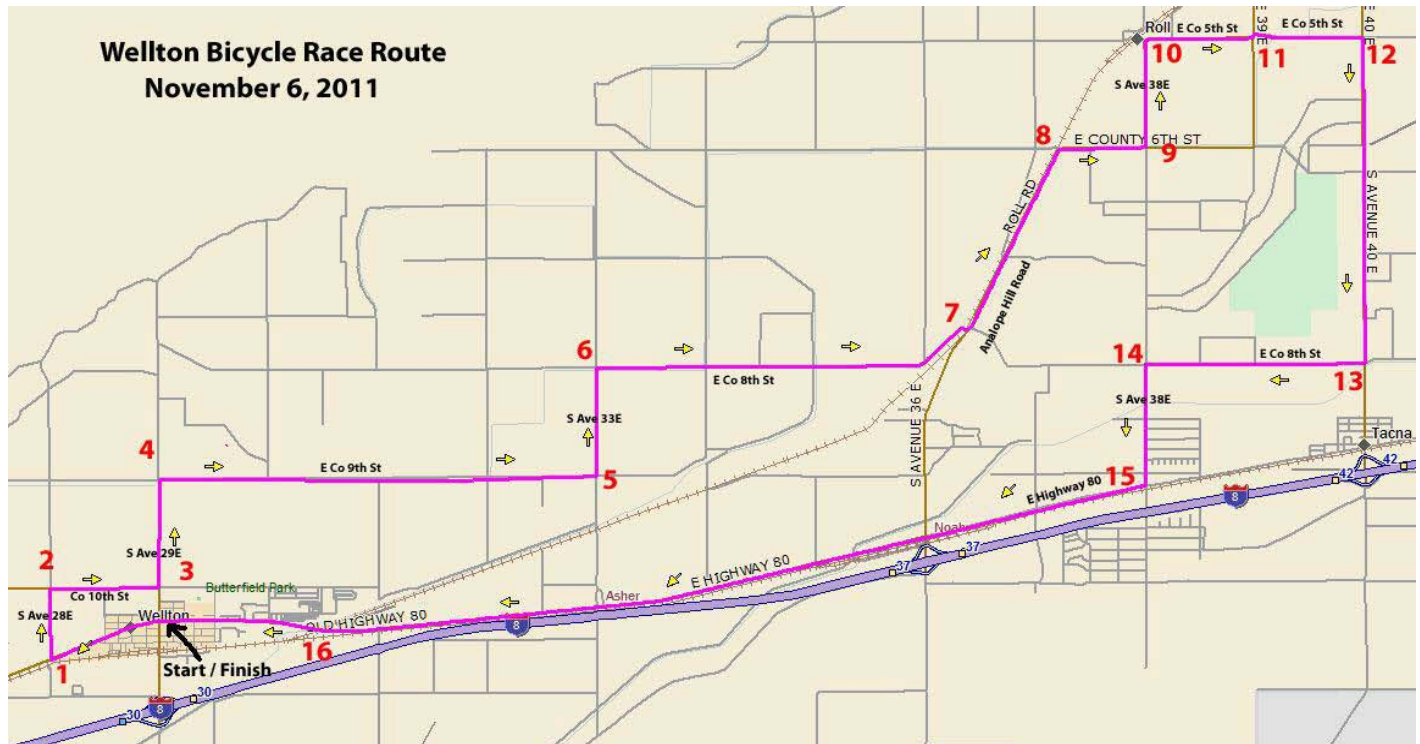
Directions - From host hotel , Clarion Suites, 2600 S. 4th Avenue, take I-8 East to Wellton, approx 28 miles. Take Exit 30, north on Williams St, East on Los Angeles Ave to parking area. Use your trainer for warm-up, no littering please – not even gel packets!

Racing Starts at 8 am (1 lap = 33 miles)

7:00am Sign-in start, wheel support provided, leave your wheel labeled with name and category

7:50 am First set of racers to the line for instructions

First racers off at 8am.



YELLOW LINE RULE IS IN EFFECT -ROAD IS OPEN TO TRAFFIC

Omnium Awards

Given after final results posted for each category in parking area – podium.

Wheel support provided for Road Race. Please leave your wheel, labeled with name and category at sign in area.

Omnium Point Structure:

Omnium points are awarded only to riders participating in the omnium competition.

Omnium points will be awarded as follows

1st place - 30 points

2nd place - 27 points

3rd place - 24 points

4th place - 22 points

5th place - 20 points

6th place - 18 points

7th place - 16 points

8th place - 14 points

9th through 20th place - 12 through 1 point

All ties will be broken by the fastest time trial time (measured to the one hundredth of a second) - if the tie remains unbroken, the rider with the highest finish in the final race (road race) will be the winner of that tie.

Message from Race Director:

This is the first year this event is being presented. We realize that November is not the "normal" race season, but the weather is beautiful here and it's a great way to end the year or begin your training for the upcoming season! Also, with El Tour de Tucson just a few weeks away, it's a good way to get some miles in and get points as well!

We hope for a successful event so that General Motors will allow us to use their testing facility in the future. We feel that this is such a great venue – closed course with no traffic, and a smooth, fast route.

Wellton is excited to once again be a part of the cycling community and have the road race in their town. The route is relatively flat and goes through east Yuma County and the farmlands of Wellton.

Thank you for your support of cycling in Arizona and allowing us to bring yet another competitive event to the USA Cycling and ABRA calendar!

Any suggestions on making this event better for the future are welcome. We look forward to seeing you on the road!

Safe cycling,

Nancy Vega
Race Director, GM Classic Omnium
President, Yuma Bike Club
nancy@yumabikeclub.org

